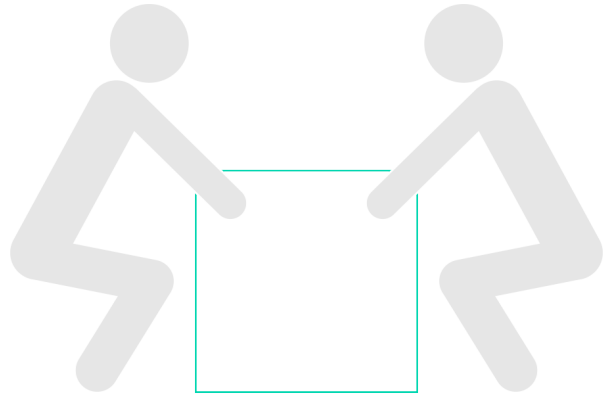
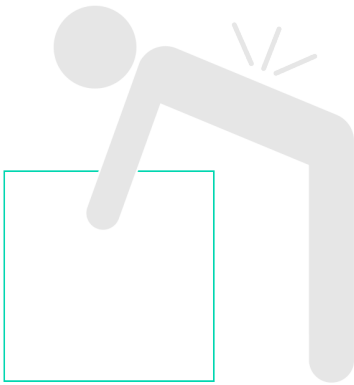
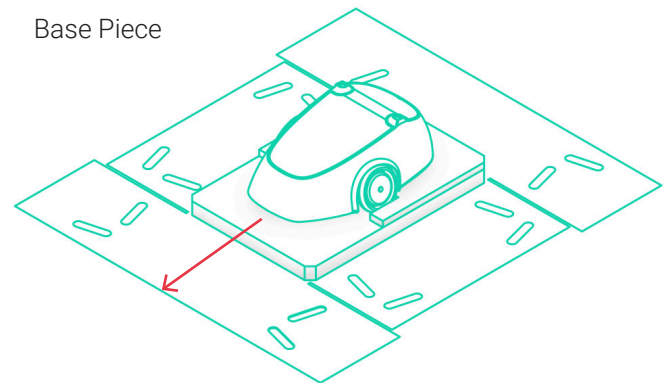
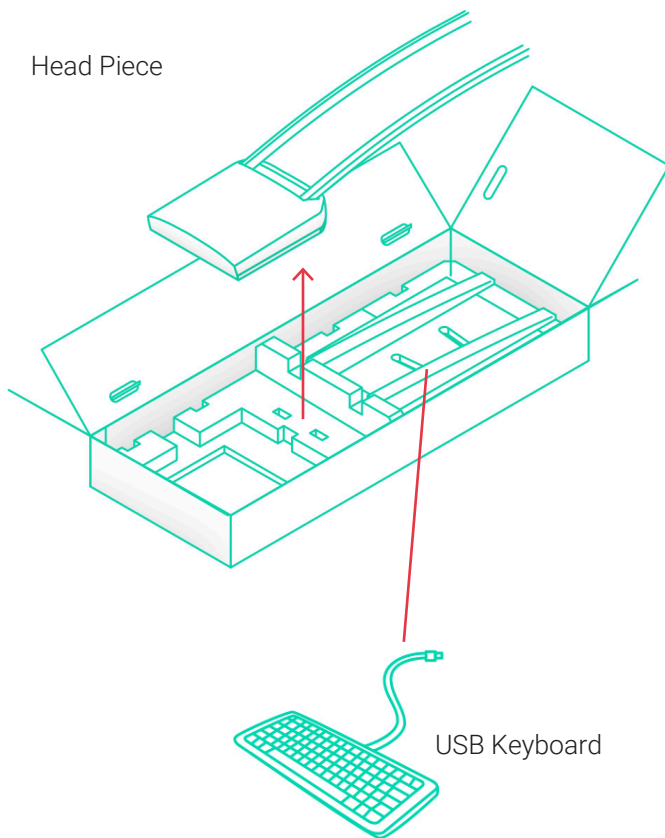


# Two people recommended for setup



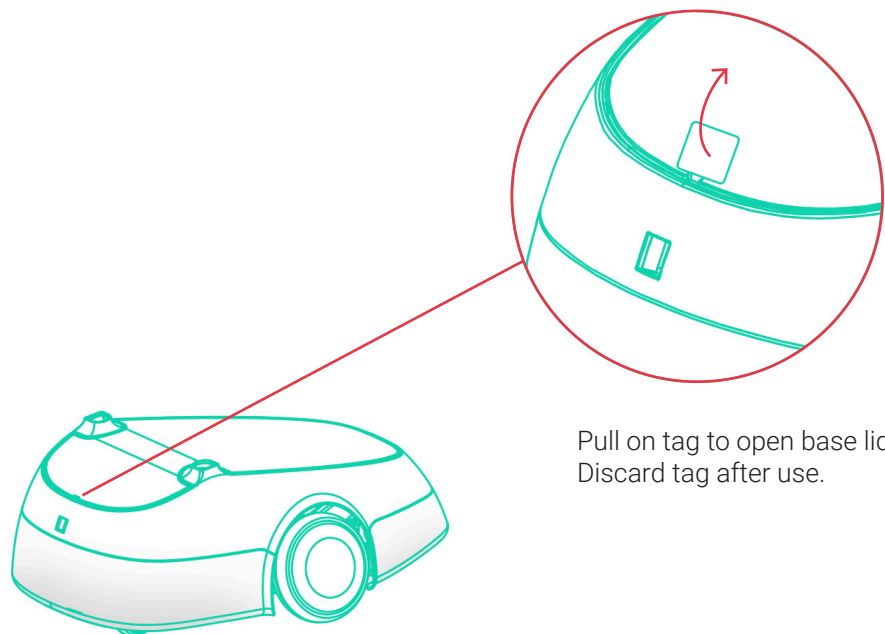
## Required components for setup



# BeamPro Setup Instructions

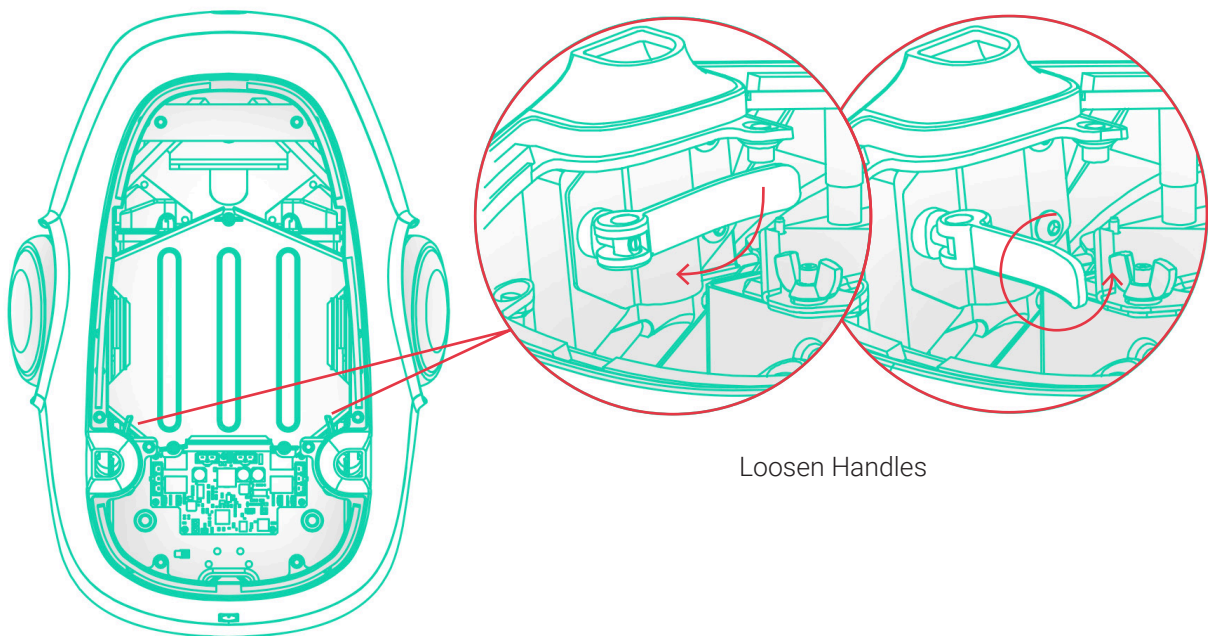


1



Pull on tag to open base lid.  
Discard tag after use.

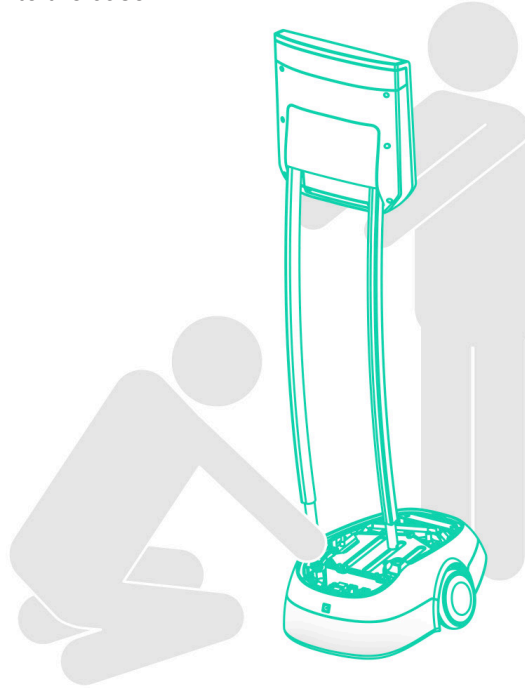
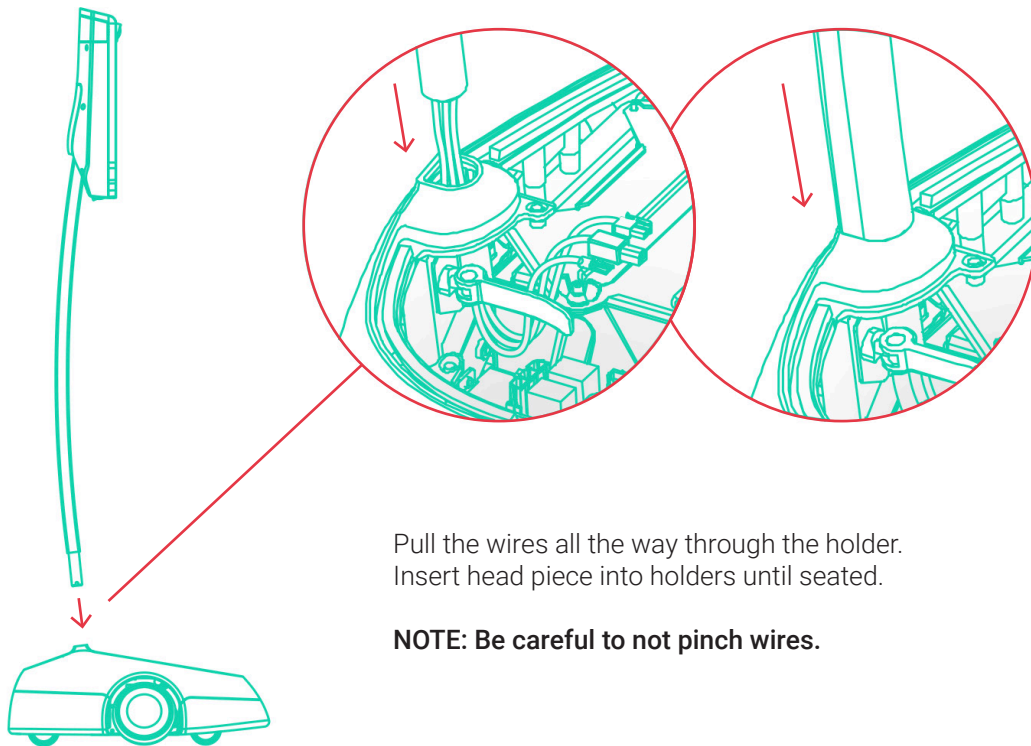
2



Loosen Handles

**3**

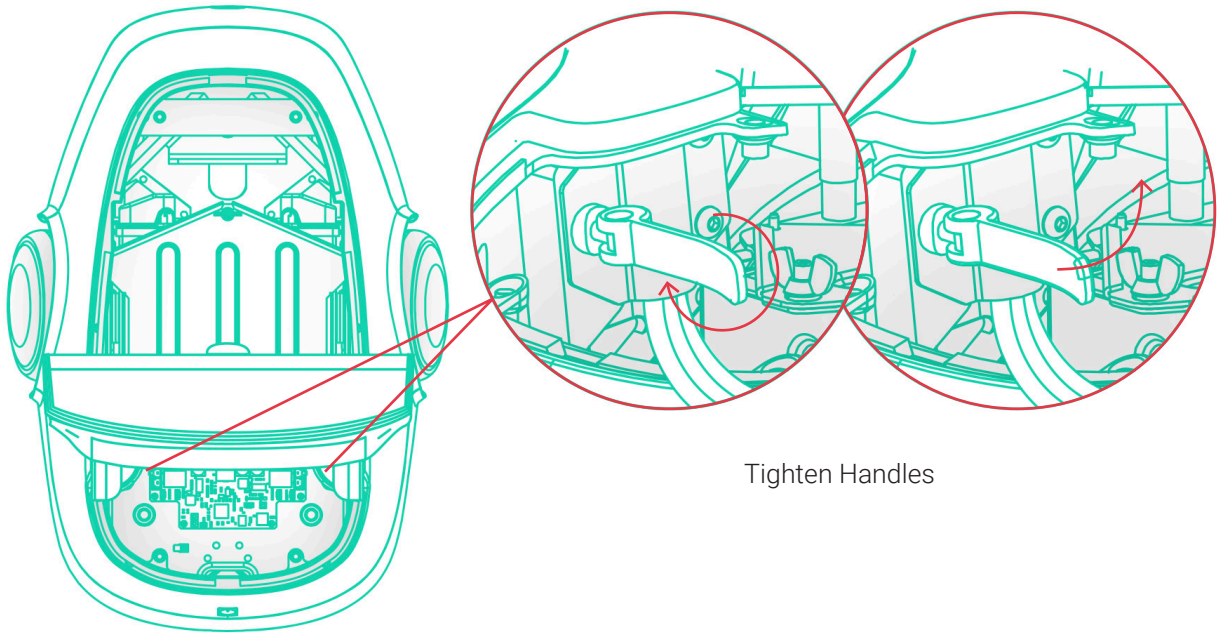
One person should hold the head while another person feeds the wires into the base.

**4**

Pull the wires all the way through the holder.  
Insert head piece into holders until seated.

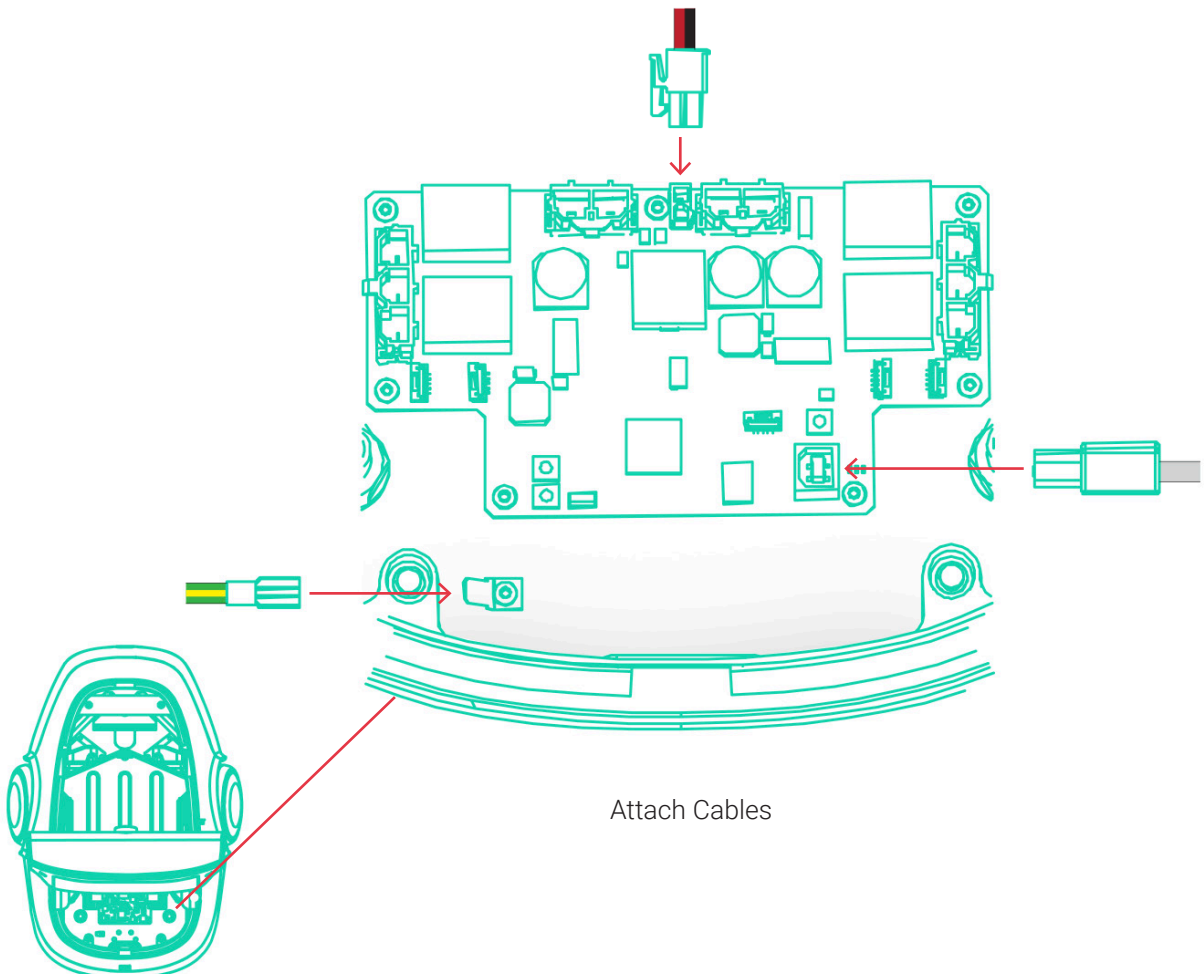
**NOTE: Be careful to not pinch wires.**

5



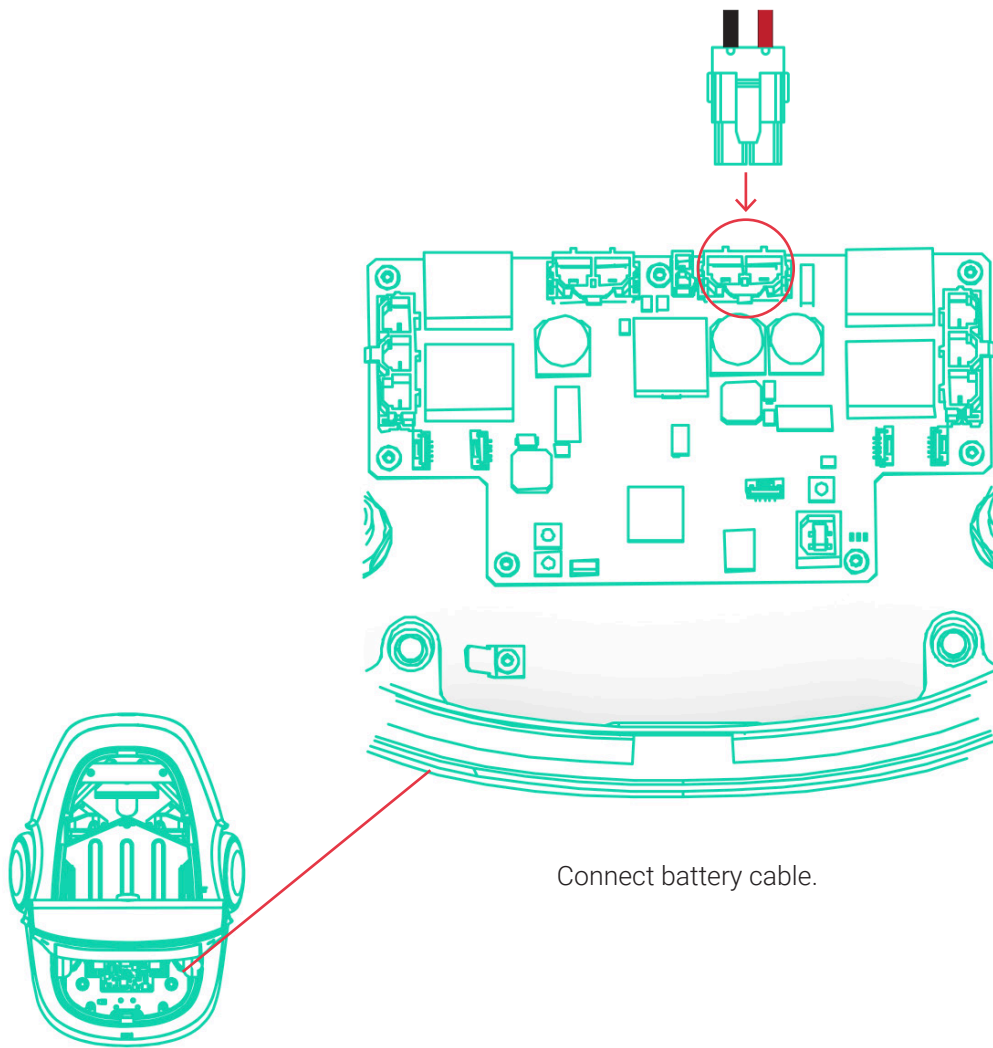
Tighten Handles

6

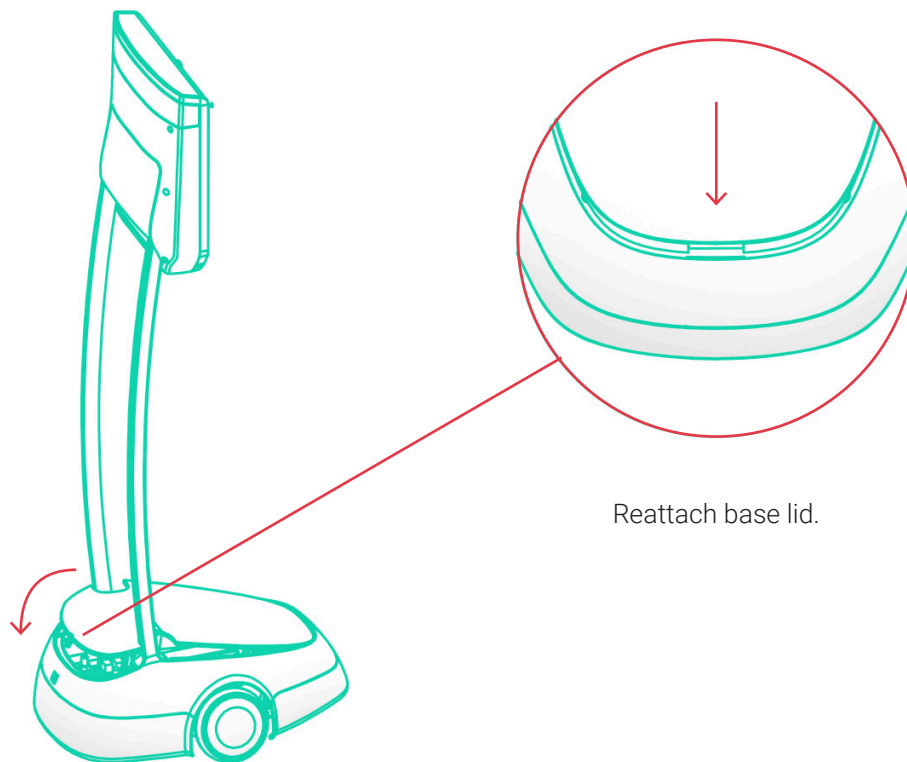


Attach Cables

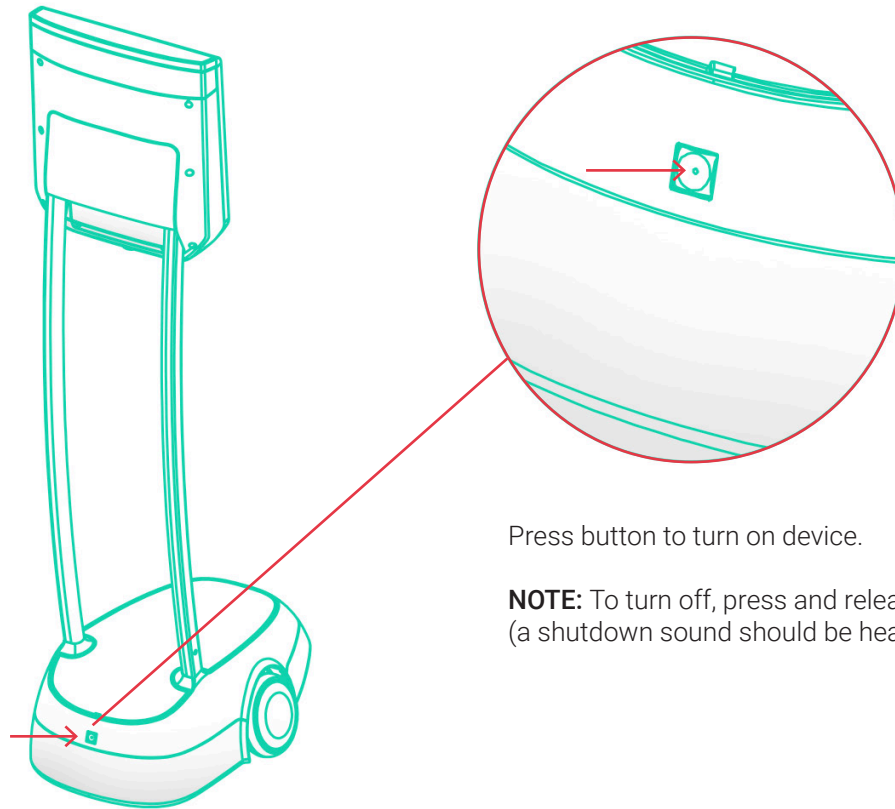
7



8

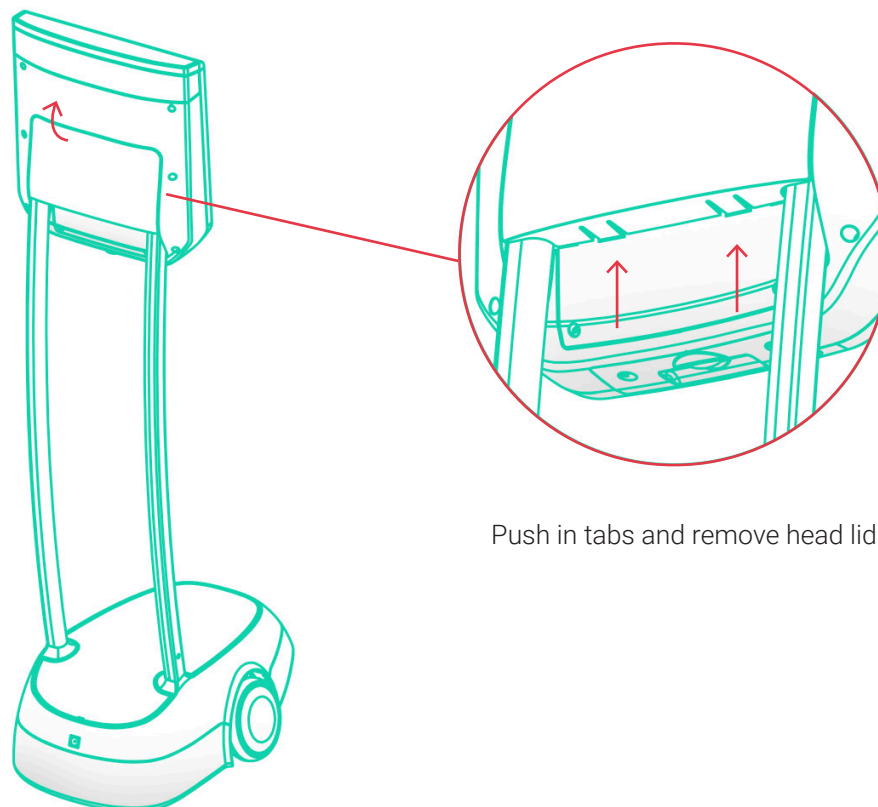




9

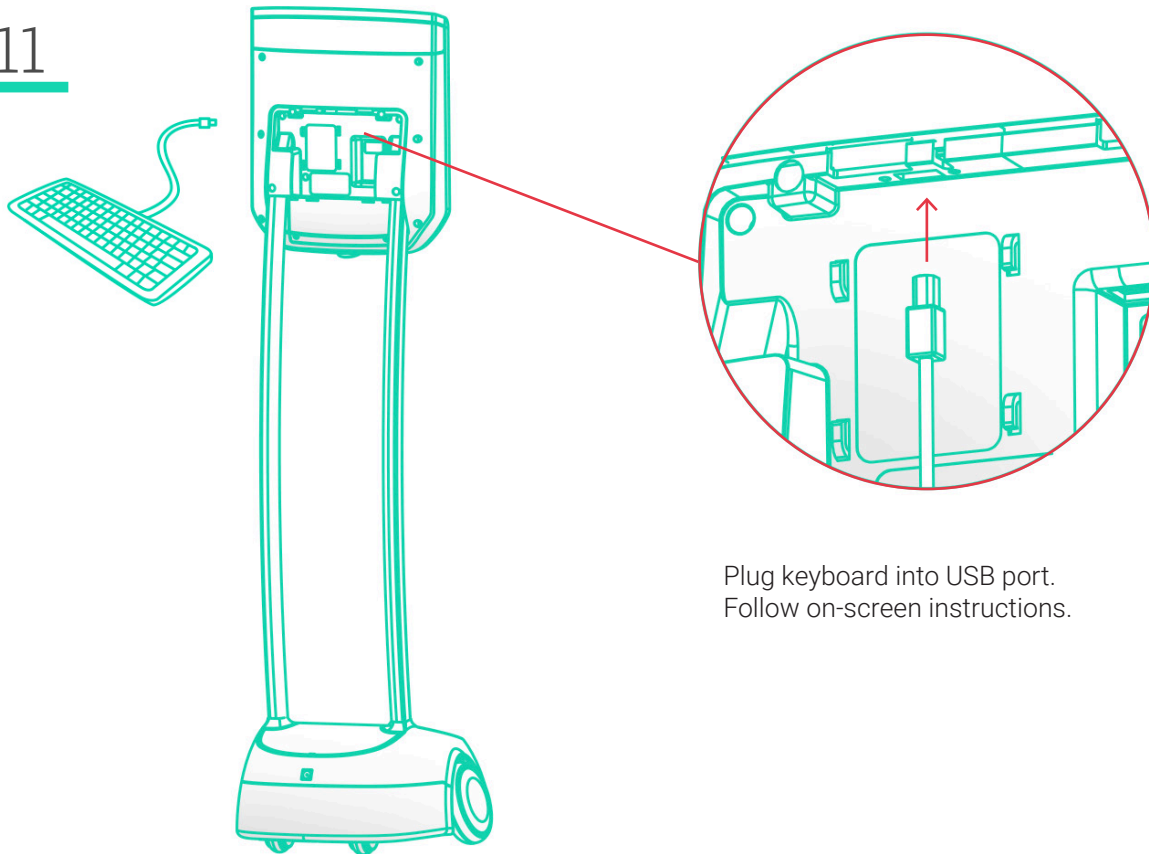
Press button to turn on device.

**NOTE:** To turn off, press and release button (a shutdown sound should be heard)

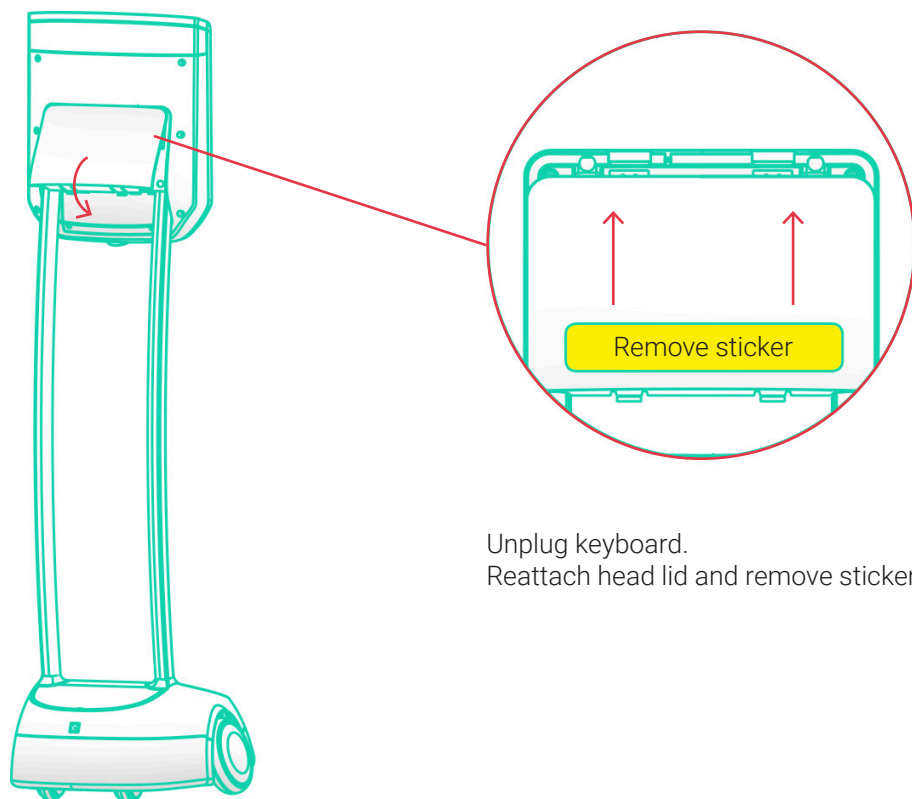
10

Push in tabs and remove head lid.

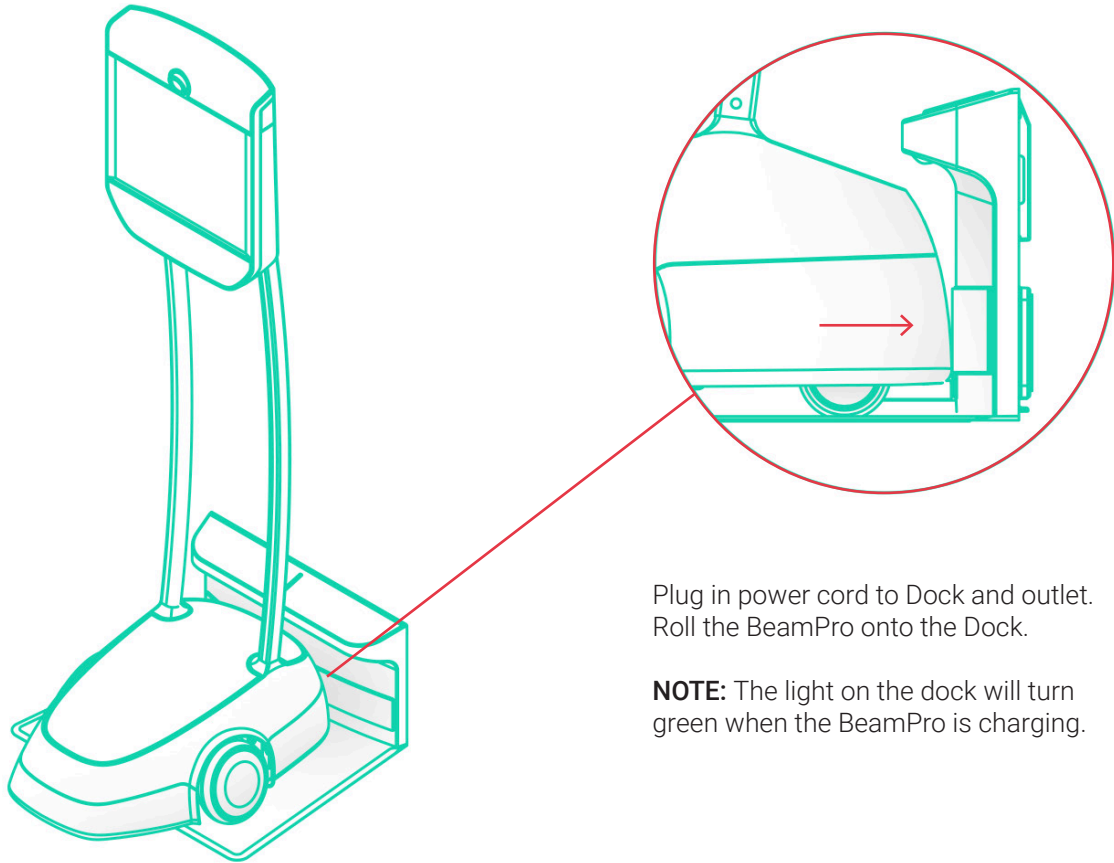
11



12

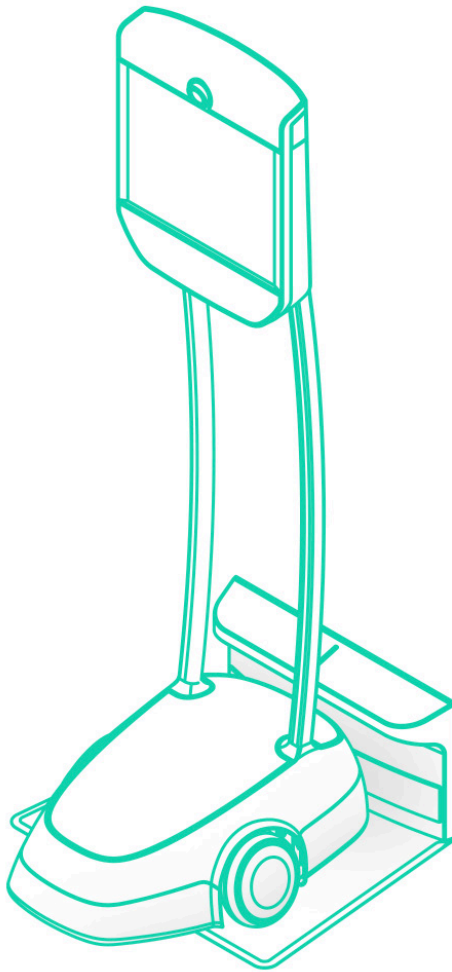






Plug in power cord to Dock and outlet.  
Roll the BeamPro onto the Dock.

**NOTE:** The light on the dock will turn green when the BeamPro is charging.



For more information and customer support, please visit [www.suitabletech.com](http://www.suitabletech.com)

This equipment has been tested and found to comply with the limits for a Class B digital device, pursuant to part 15 of the FCC Rules. These limits are designed to provide reasonable protection against harmful interference in a residential installation. This equipment generates, uses and can radiate radio frequency energy and, if not installed and used in accordance with the instructions, may cause harmful interference to radio communications. However, there is no guarantee that interference will not occur in a particular installation. If this equipment does cause harmful interference to radio or television reception, which can be determined by turning the equipment off and on, the user is encouraged to try to correct the interference by one or more of the following measures: (1) Reorient or relocate the receiving antenna. (2) Increase the separation between the equipment and receiver. (3) Connect the equipment into an outlet on a circuit different from that to which the receiver is connected. (4) Consult the dealer or an experienced radio/TV technician for help.)

Copyright © 2017 Suitable Technologies, Inc.