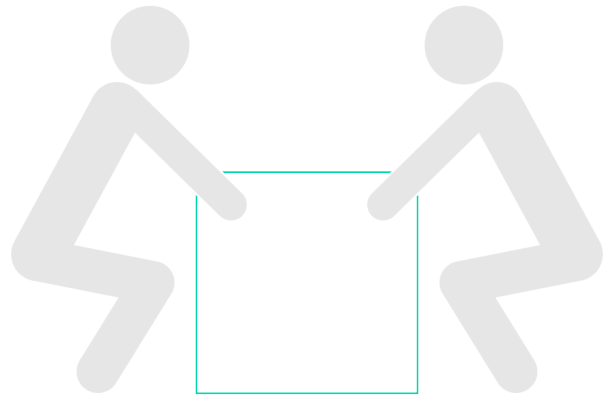
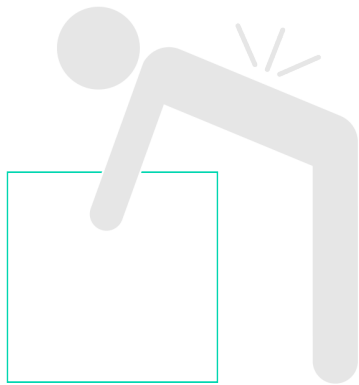
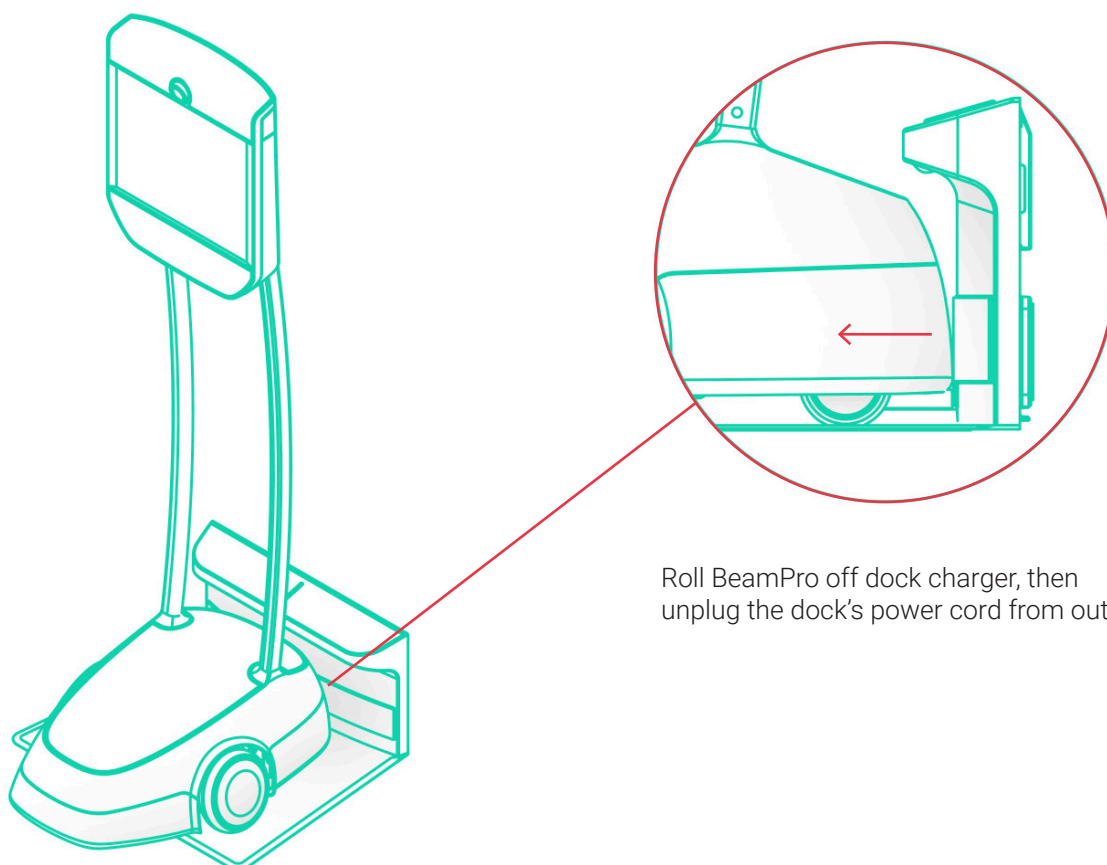


Safety: Two people recommended for setup

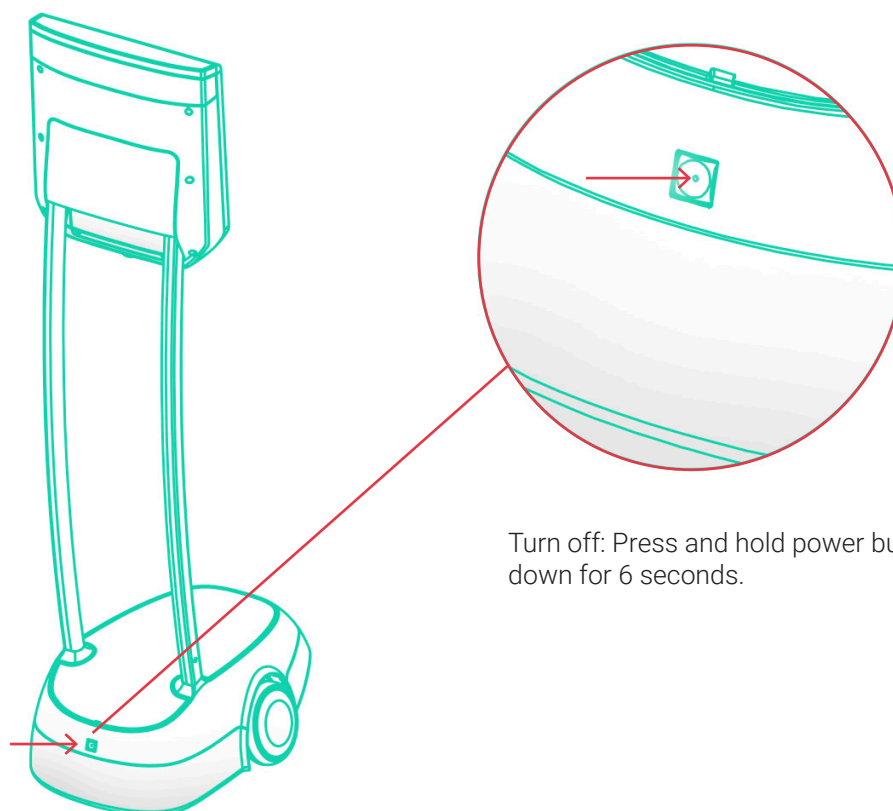


1



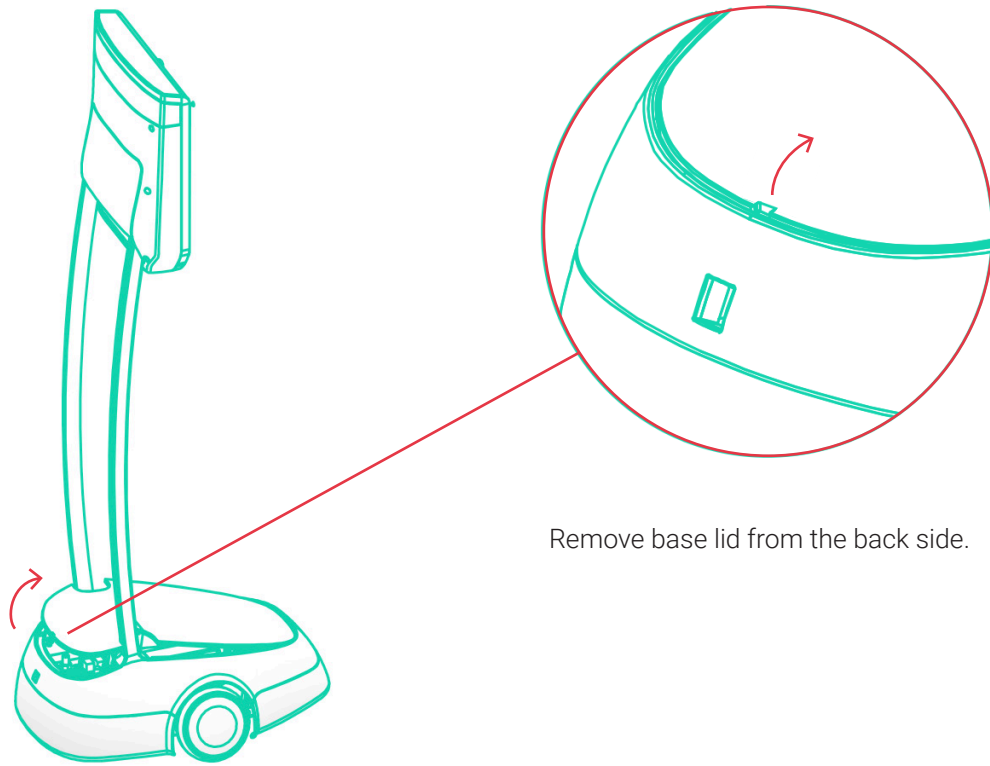
Roll BeamPro off dock charger, then unplug the dock's power cord from outlet.

2



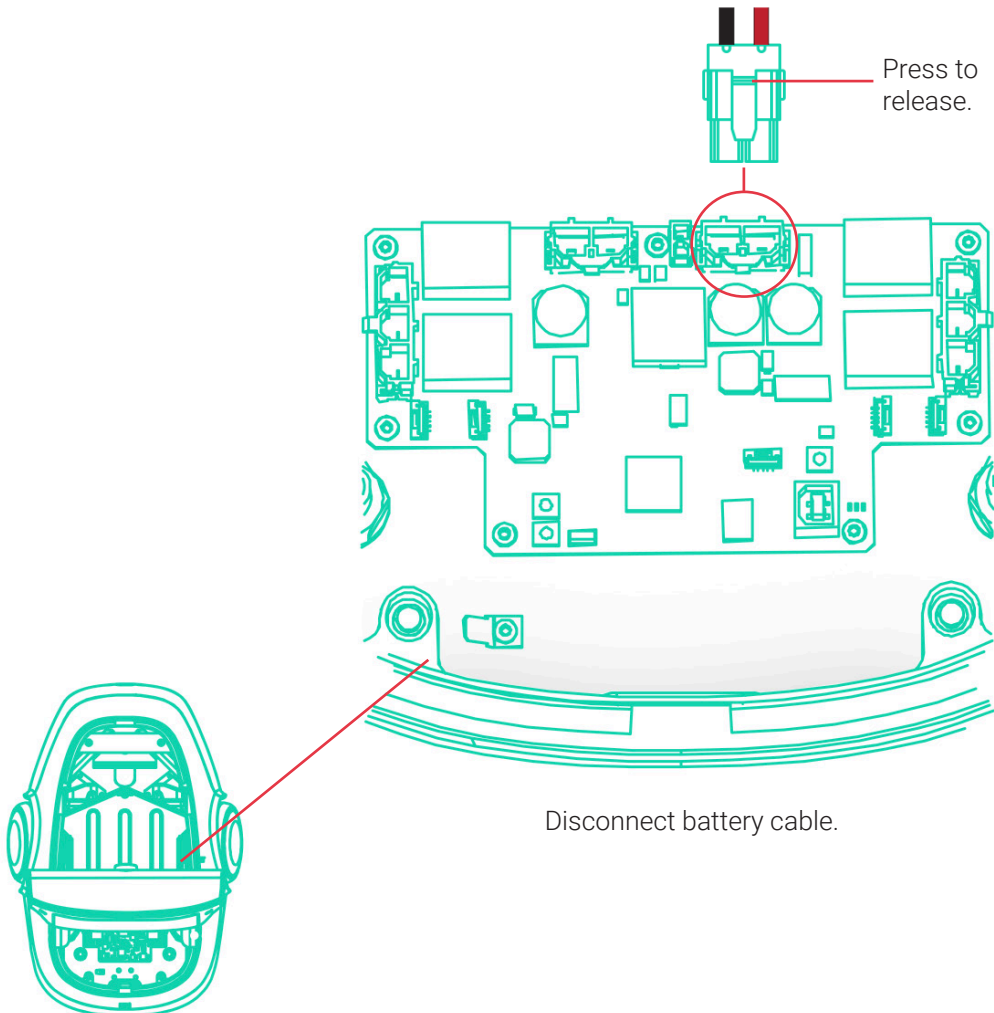
Turn off: Press and hold power button down for 6 seconds.

3



Remove base lid from the back side.

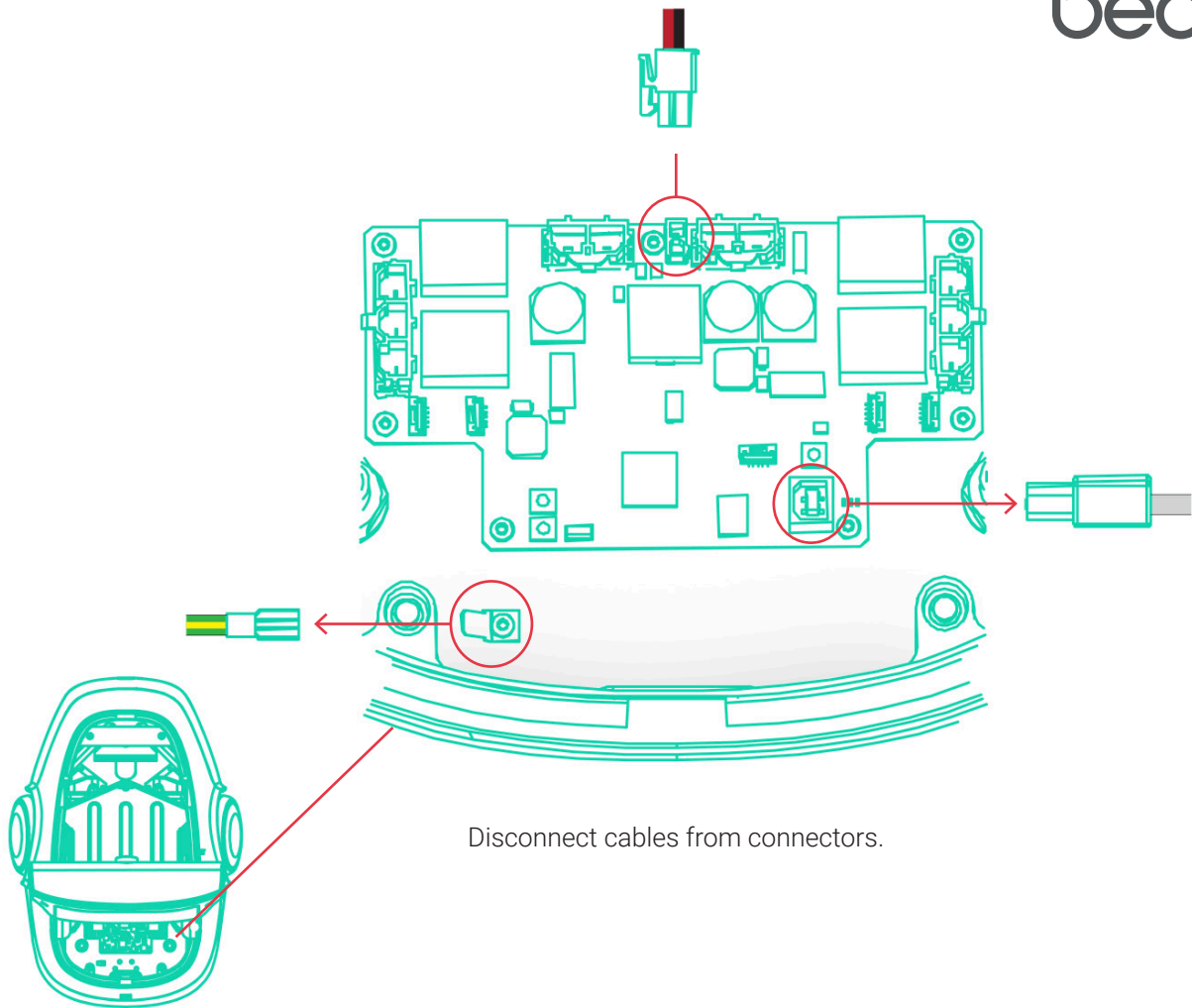
4



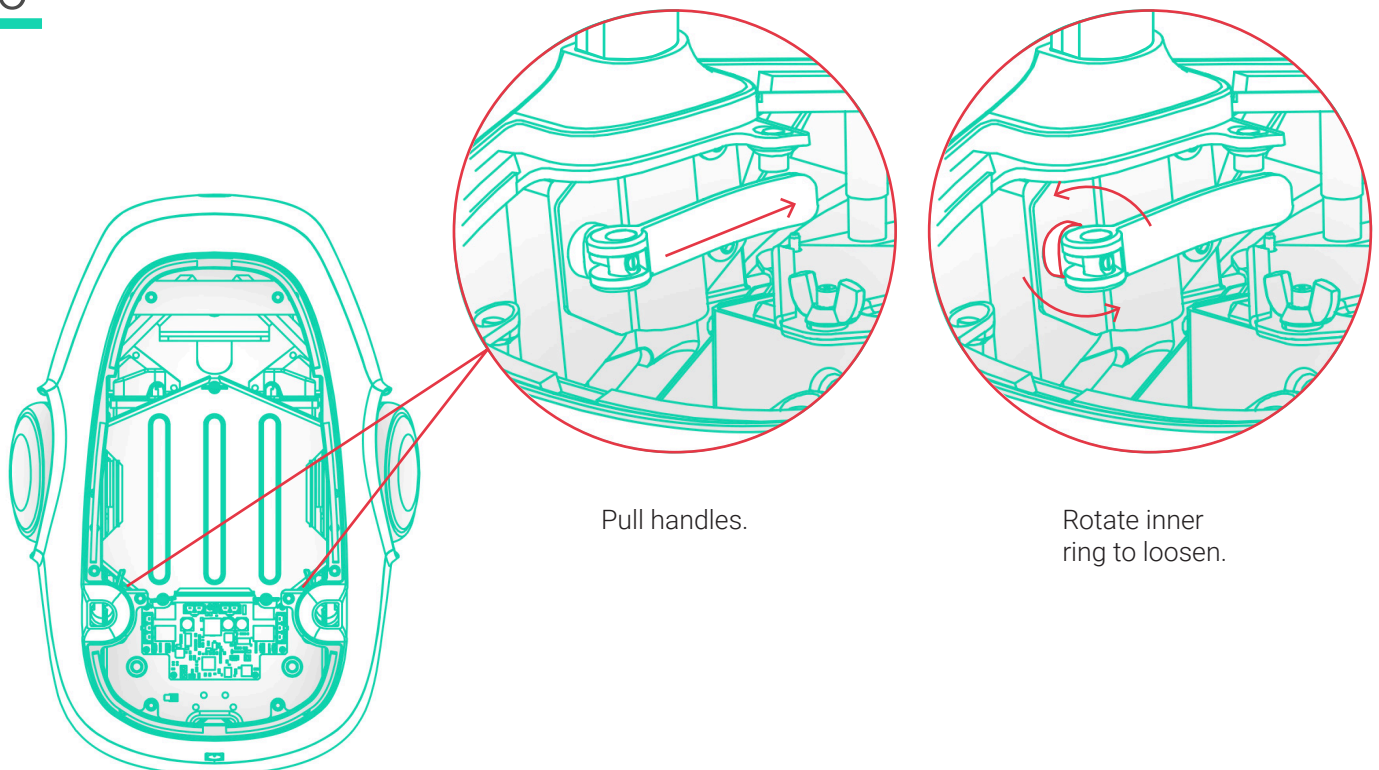
Press to
release.

Disconnect battery cable.

5

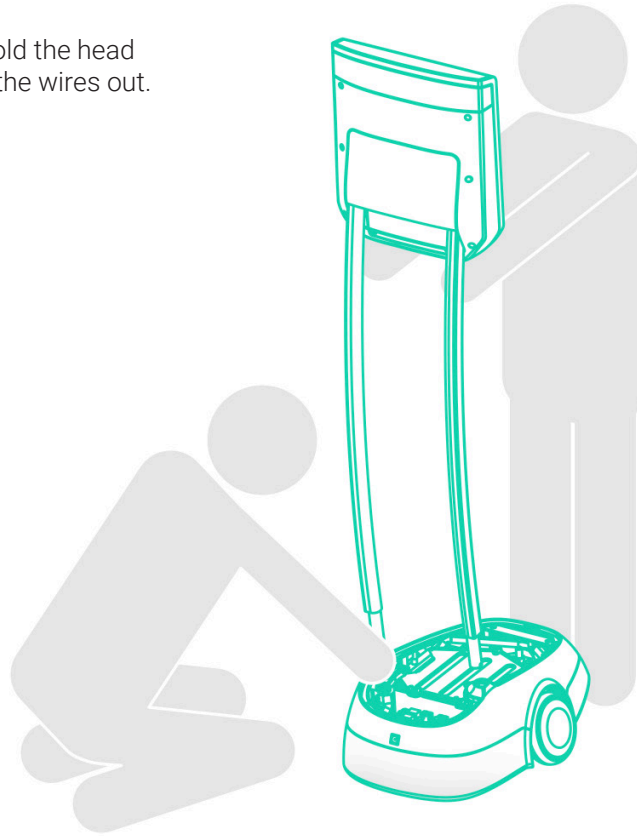


6

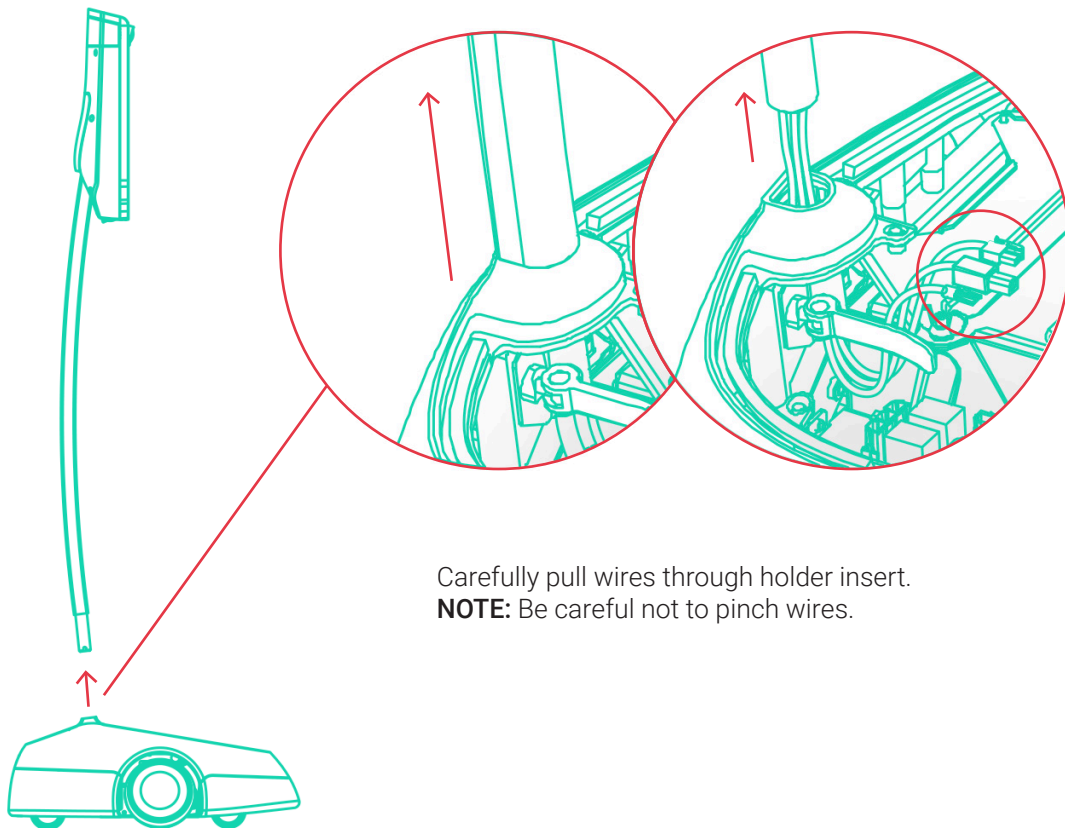


7

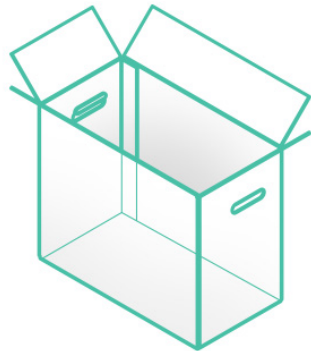
One person should hold the head and one should feed the wires out.



8

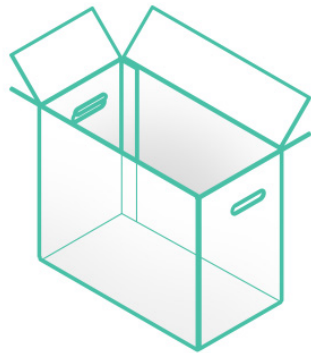


Carefully pull wires through holder insert.
NOTE: Be careful not to pinch wires.



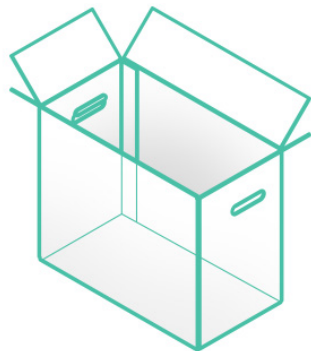
Single Dock

- (1) Docking station with power cord
- (6) Foam packaging pieces
- (2) Plastic bags
- (1) Shipping box



Double Dock

- (2) Docking stations with power cords
- (6) Foam packaging pieces
- (4) Plastic bags
- (1) Shipping box



Base

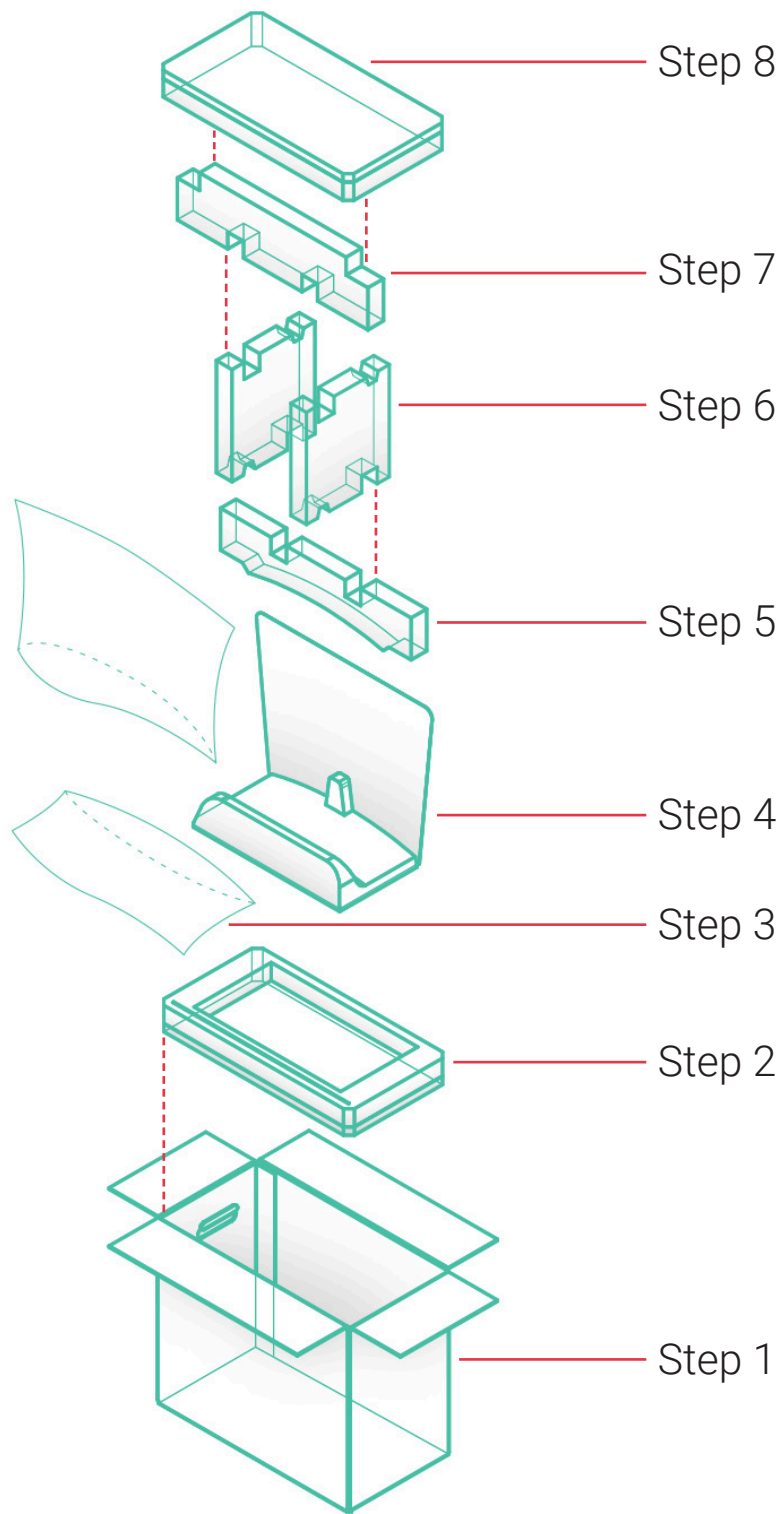
- (1) Motorized base with top lid
- (3) Foam packaging pieces
- (1) Plastic bag
- (1) Shipping box



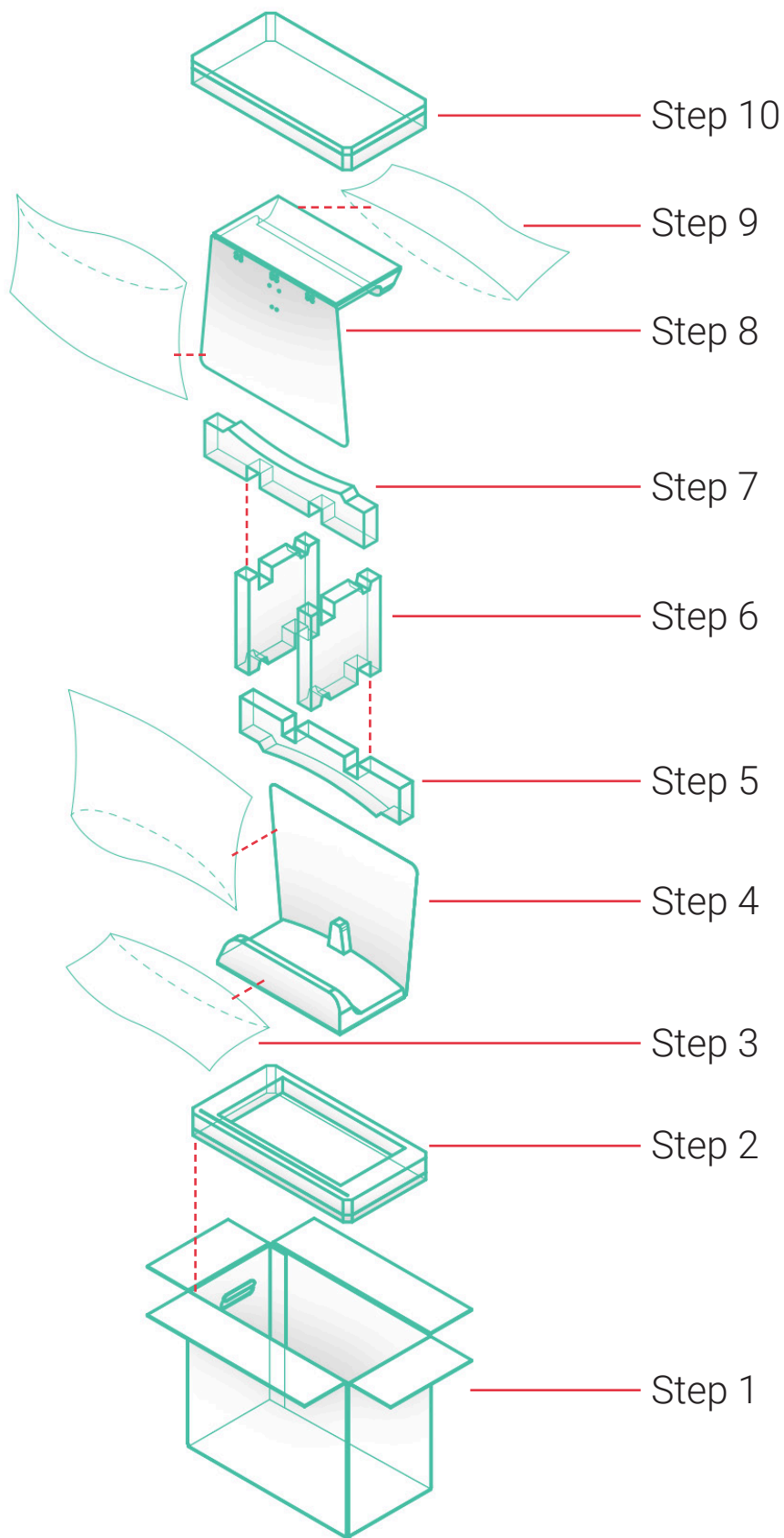
Head

- (1) Monitor with 2 connected posts
- (1) Foam packaging pieces
- (4) Plastic bags
- (1) Shipping box

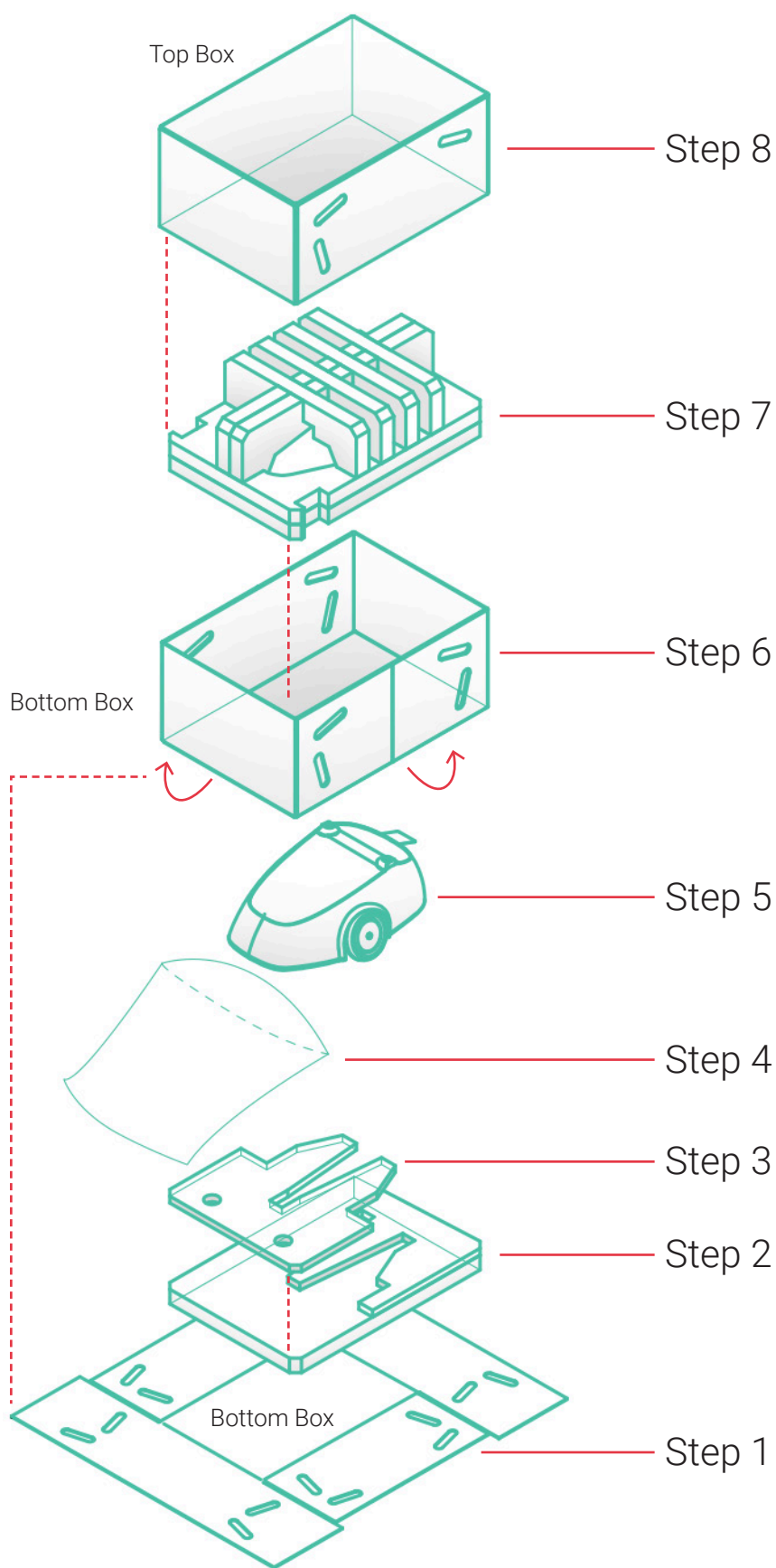
Single Dock Packing Instructions



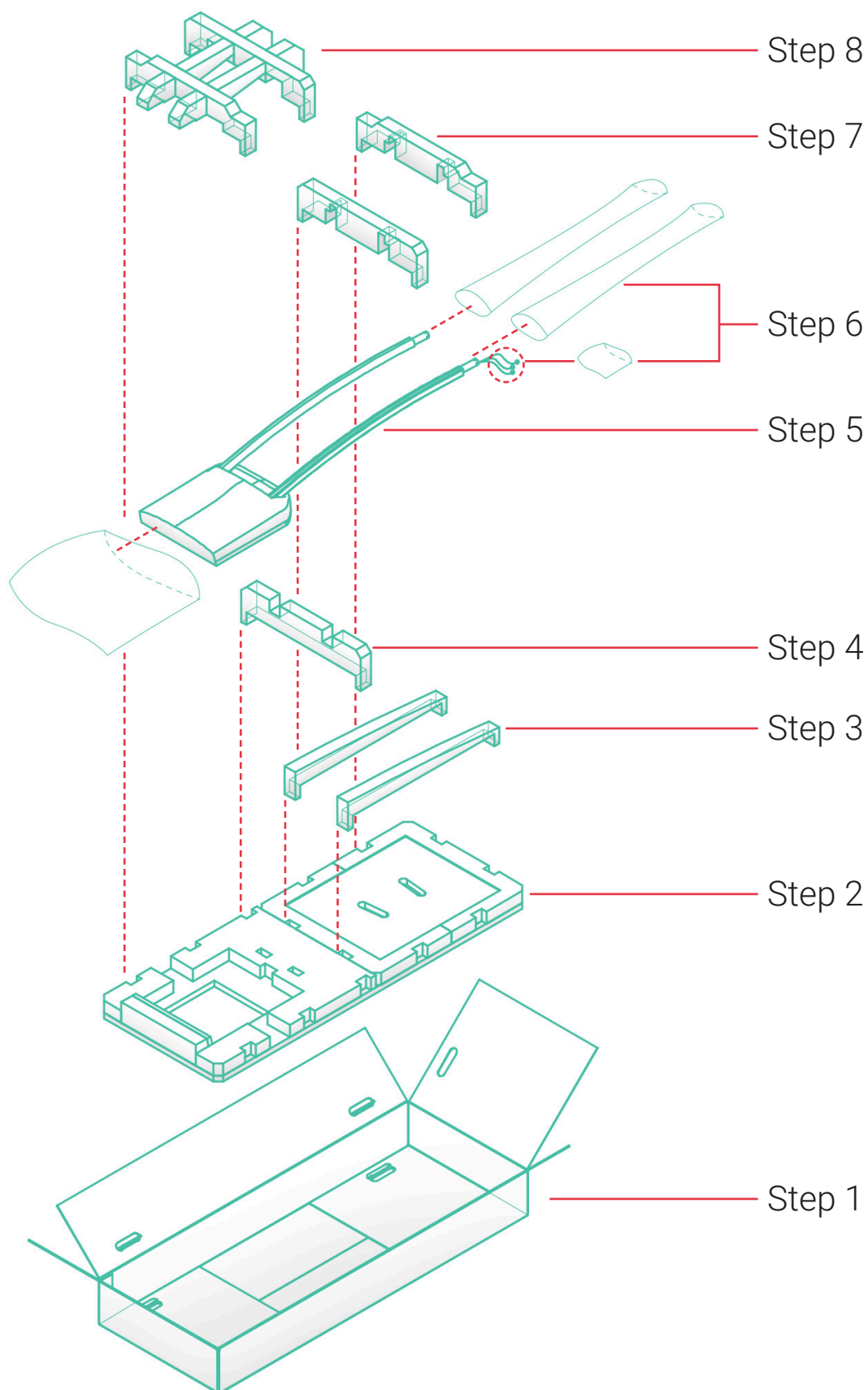
Double Dock Packing Instructions

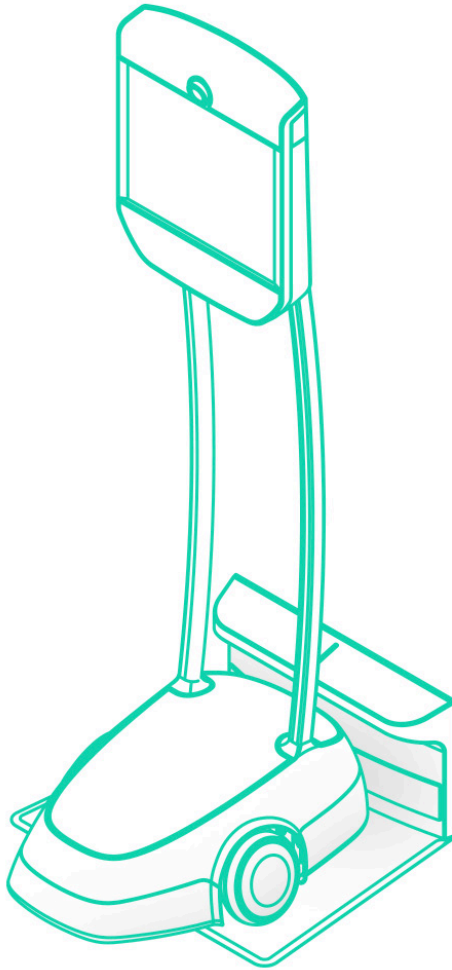


Base Packing Instructions



Head Packing Instructions





For more information and customer support, please visit www.suitabletech.com

This equipment has been tested and found to comply with the limits for a Class B digital device, pursuant to part 15 of the FCC Rules. These limits are designed to provide reasonable protection against harmful interference in a residential installation. This equipment generates, uses and can radiate radio frequency energy and, if not installed and used in accordance with the instructions, may cause harmful interference to radio communications. However, there is no guarantee that interference will not occur in a particular installation. If this equipment does cause harmful interference to radio or television reception, which can be determined by turning the equipment off and on, the user is encouraged to try to correct the interference by one or more of the following measures: (1) Reorient or relocate the receiving antenna. (2) Increase the separation between the equipment and receiver. (3) Connect the equipment into an outlet on a circuit different from that to which the receiver is connected. (4) Consult the dealer or an experienced radio/TV technician for help.)

Copyright © 2017 Suitable Technologies, Inc.